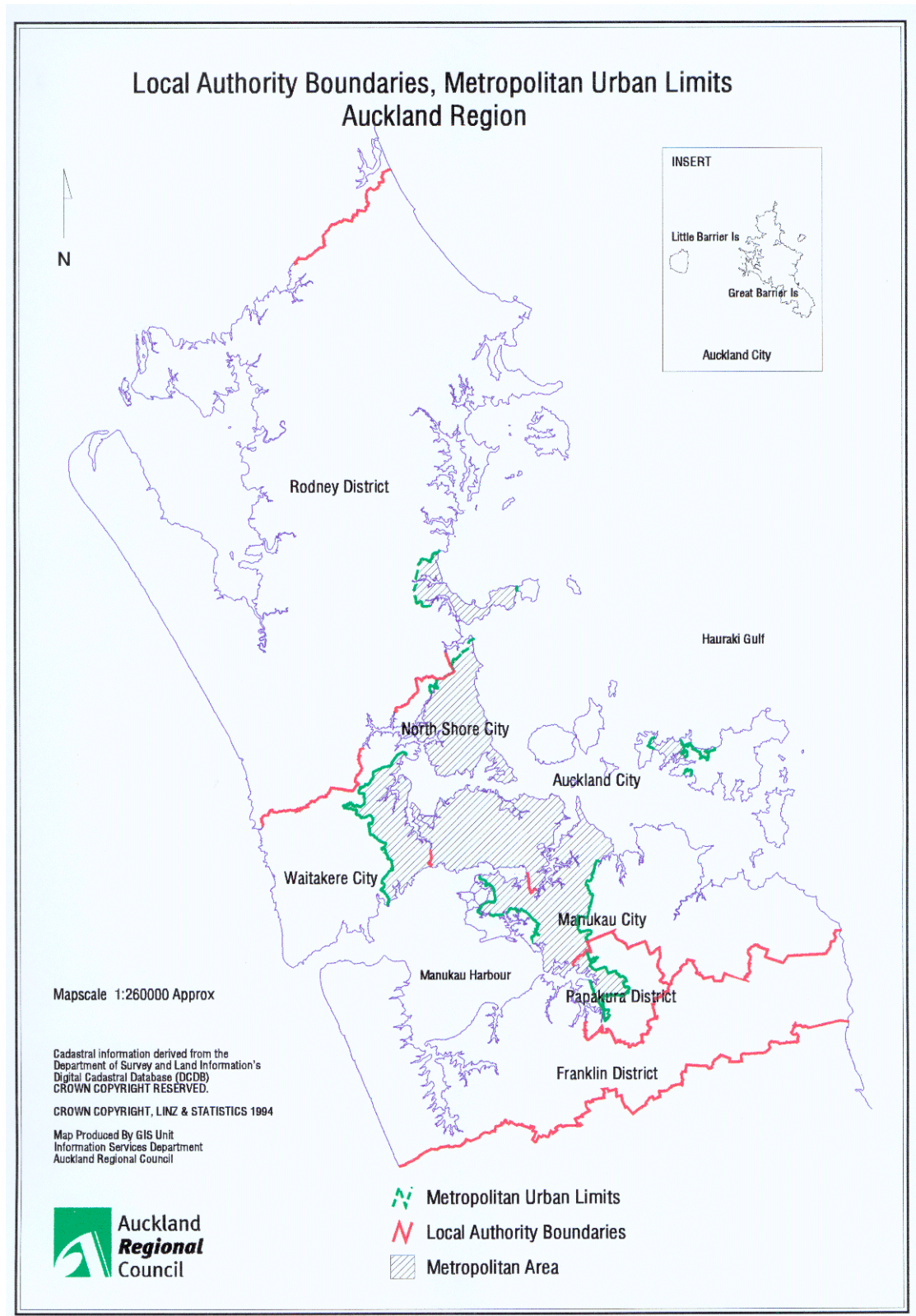


# Riparian Zone Management

Strategy for the Auckland Region

Figure 2 The Metropolitan Urban Limits in the Auckland Region

Source: Auckland Regional Council, 2000

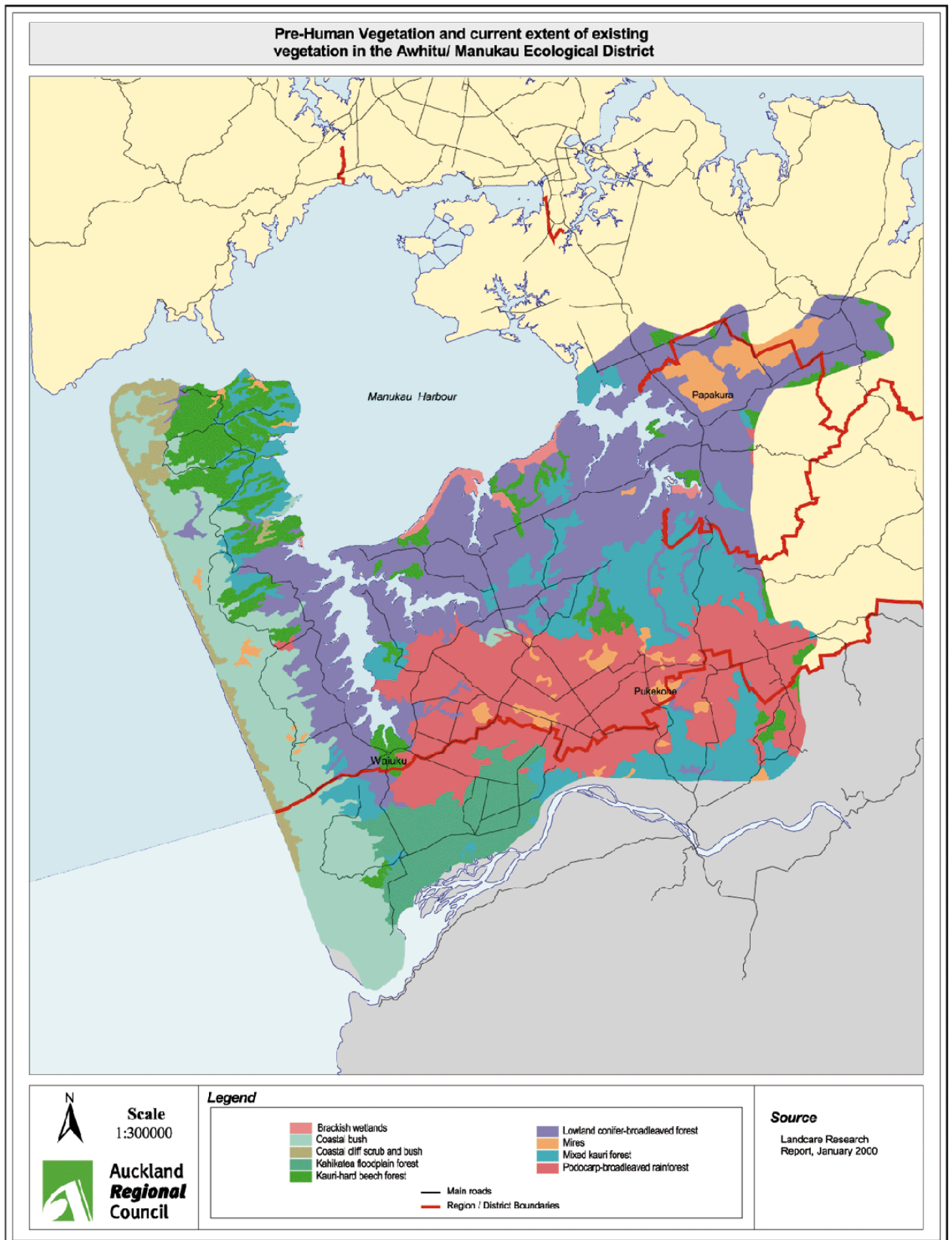


# Riparian Zone Management

Strategy for the Auckland Region

Figure 3 Original (Pre-Human) vegetation and current extent of existing vegetation in Awhitu/Manukau Ecological Districts

Source: Emmett et al, Indigenous vegetation of the Awhitu and Manukau ecological districts. Landcare Research. Prepared for ARC. January 2000



## Riparian Zone Management

Strategy for the Auckland Region

Figure 4 Land Cover Database for Auckland Region, showing current extent of indigenous forest, scrub, pasture, urban area, wetlands etc

Source: Landcover Database for Auckland Region. Terralink Ltd. (2000)

